

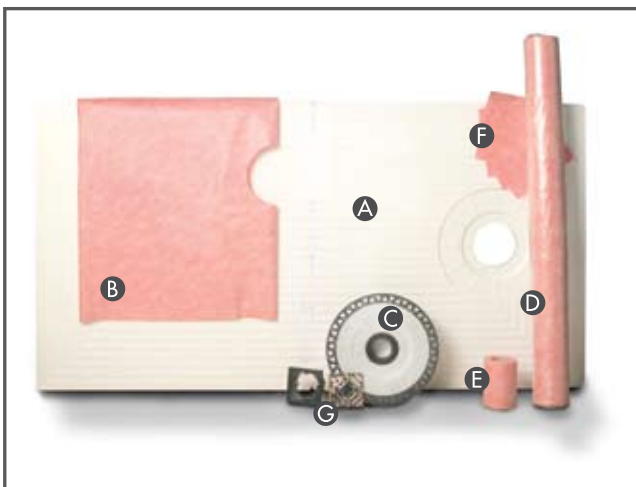
ProVa-Shower System



FOR TILED SHOWERS

- All the components required to build a fully bonded water tight assembly for tiled showers.
- No waiting time between steps; tiles can be installed immediately.
- Protects wall cavities against water and vapour penetration.
- Prefabricated sloped pan eliminates mortar bed, reducing weight and installation time.
- All components sold separately.

32" x 60"
(82cm x 152cm)



A complete, easy to install
WATERPROOFING SYSTEM
for maintenance-free tiled showers

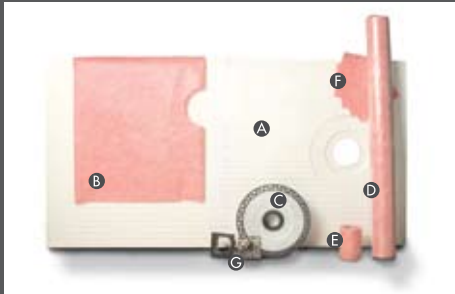
- | | |
|---------------------------|----------------------|
| A. ProVa-Pan | E. ProVa-Joint strip |
| B. ProVa- Mat floor panel | F. ProVa-Corners |
| C. ProVa-Drain | G. ProVa-Drain grate |
| D. ProVa-Mat | |

Loxcreen
FLOORING GROUP

For more information please contact us
Tel: 1 (800) 565-6653
www.loxcreenflooring.com

ProVa-Shower System

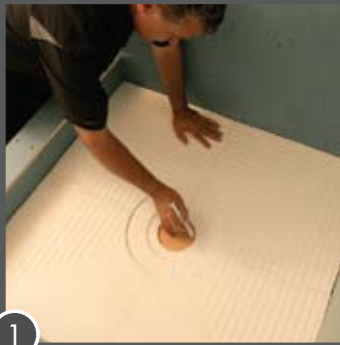
FOR TILED SHOWERS



All the components necessary to build a fully bonded watertight assembly for tiled showers

- A. ProVa-Pan
- B. ProVa- Mat floor panel
- C. ProVa-Drain
- D. ProVa-Mat
- E. ProVa-Joint strip
- F. ProVa-Corners
- G. ProVa-Drain grate

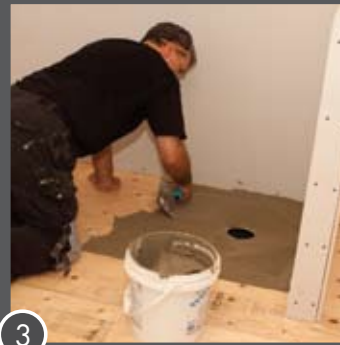
Installation Highlights: For representative purposes only. Please consult Loxcreen Shower System technical literature for complete installation instructions.



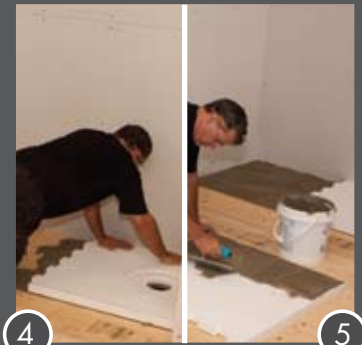
1



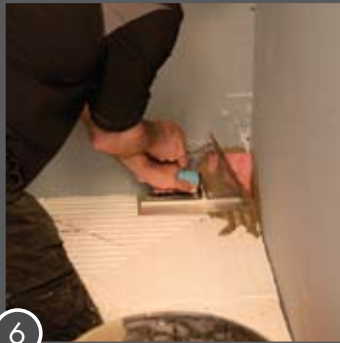
2



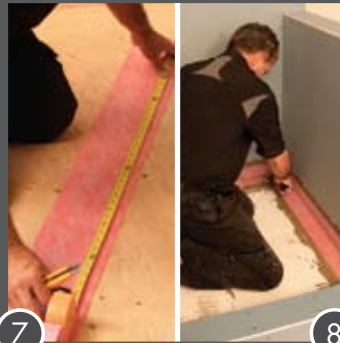
3



5



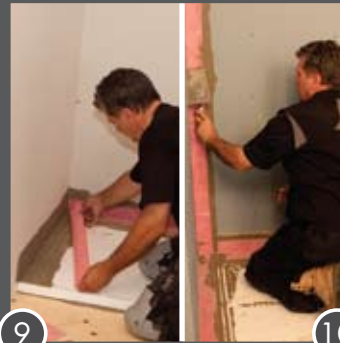
6



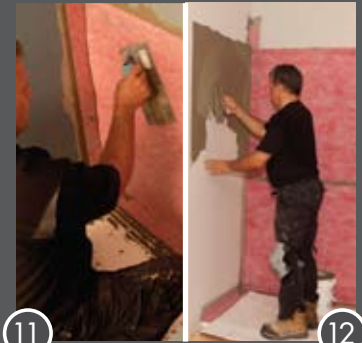
7



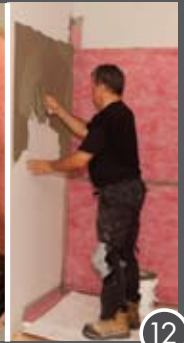
8



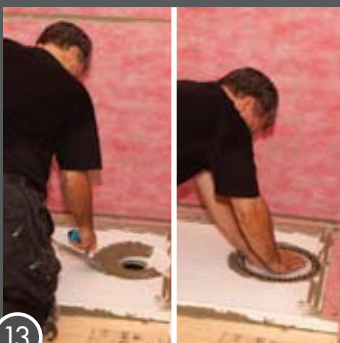
9



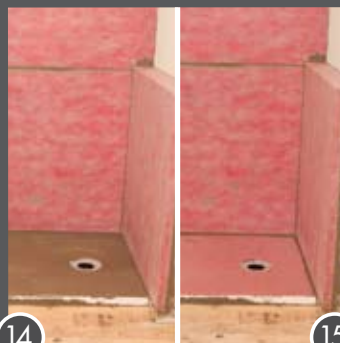
11



12



13



14



15



16



17