

ProVa-Shower System



FOR TILED SHOWERS

- All the components required to build a fully bonded water tight assembly for tiled showers.
- No waiting time between steps; tiles can be installed immediately.
- Protects wall cavities against water and vapour penetration.
- Prefabricated sloped pan eliminates mortar bed, reducing weight and installation time.
- All components sold separately.

32" x 60" (82cm x 152cm)

Available in both PVC and ABS



Also Available in PVC

A complete, easy to install
WATERPROOFING SYSTEM
for maintenance-free tiled showers

- A. ProVa-Pan
- B. ProVa- Mat floor panel
- C. ProVa-Drain
- D. ProVa-Mat
- E. ProVa-Joint strip
- F. ProVa-Corners
- G. ProVa-Drain grate

Now includes the **EXCLUSIVE**
to our ProVa Shower Systems

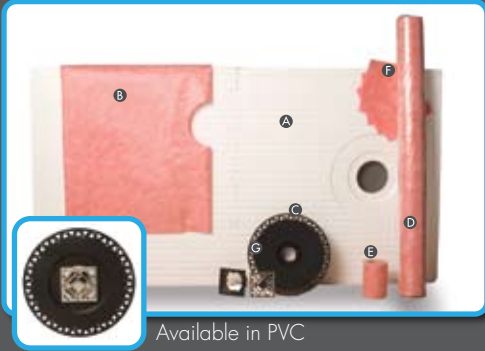
ProVa-Bond™
Surface Treatment

Loxcreen
FLOORING GROUP

For more information please contact us
Tel: 1 (800) 565-6653
www.loxcreenflooring.com

ProVa-Shower System

FOR TILED SHOWERS Available in Both PVC and ABS



All the components necessary to build a fully bonded watertight assembly for tiled showers

- A. ProVa-Mat
- B. ProVa-Joint strip
- C. ProVa-Drain grate
- D. ProVa-Drain
- E. ProVa-Mat floor panel
- F. ProVa-Pan
- G. ProVa-Corners

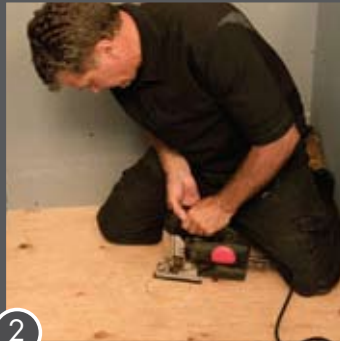
Now includes the **EXCLUSIVE** to our ProVa Shower Systems

ProVa-Bond™
Surface Treatment

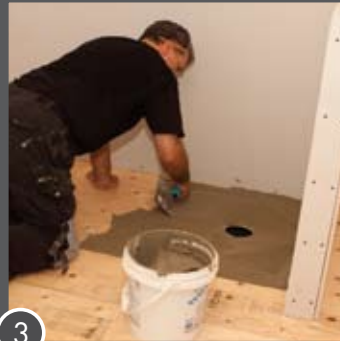
Installation Highlights: For representative purposes only. Please consult Loxcreen Shower System technical literature for complete installation instructions.



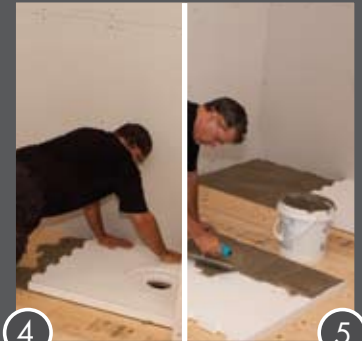
1



2

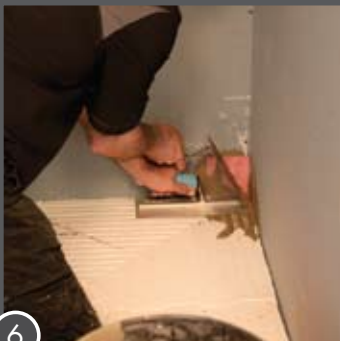


3

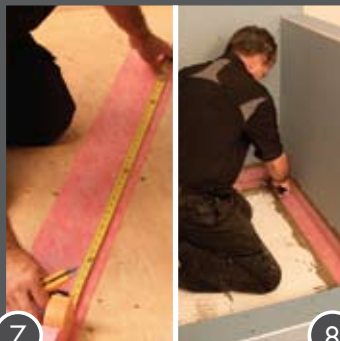


4

5



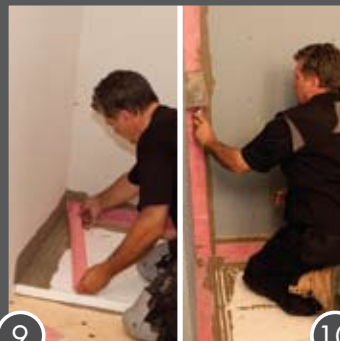
6



7



8



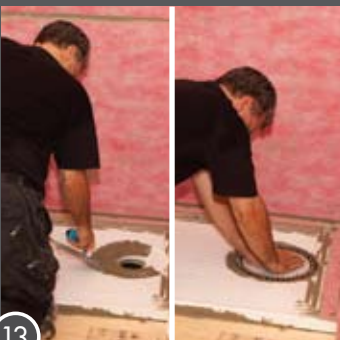
9



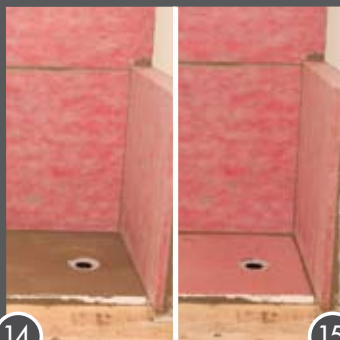
10

11

12



13



14



15



16



17